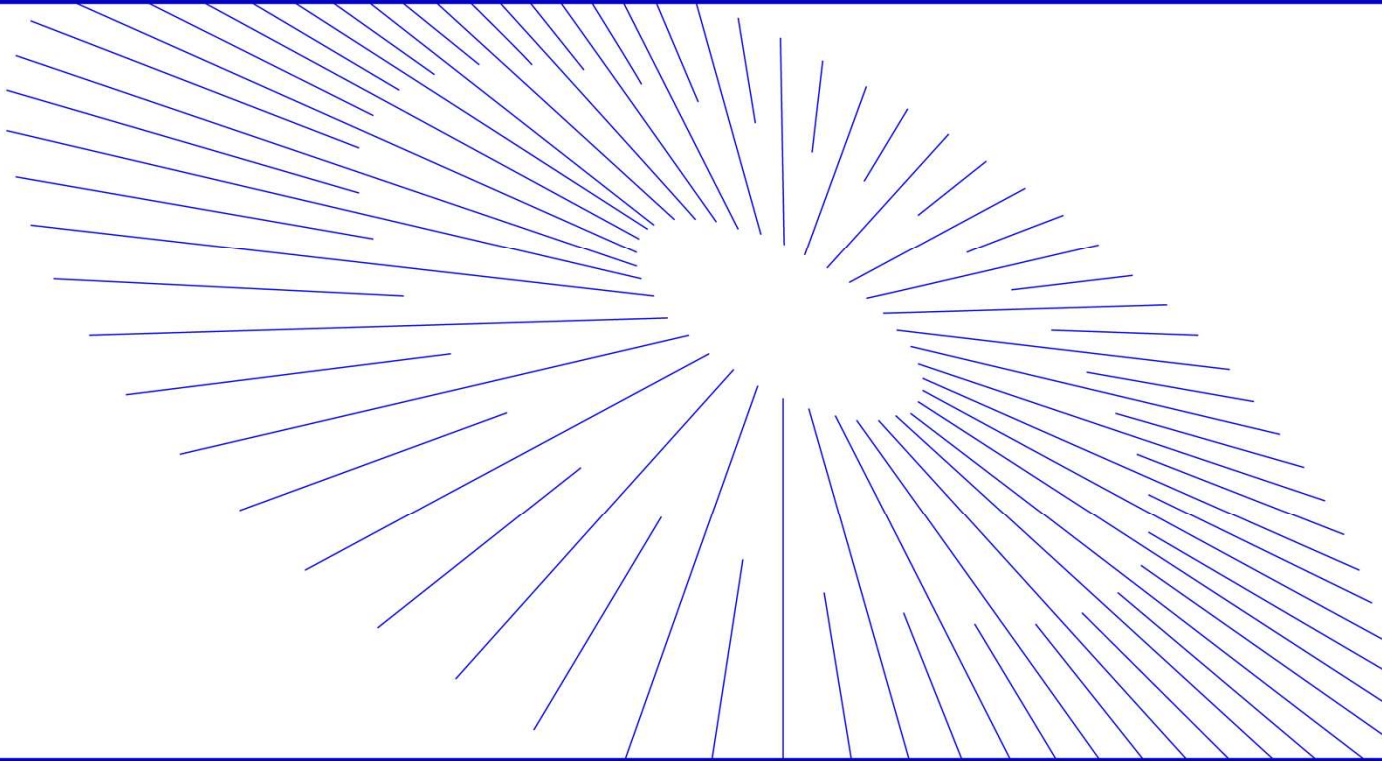


# Edge2 v10.5.3 Release Notes

## (November 19, 2025)

---



EARTHBRAIN



Classification	Items	Summary	Detail page
New function Improvement	Download Mount Point List	In the Edge2 settings screen, specifying the mount point for the network RTK service has changed from manual entry to a download-based method.	P 4
	GCP annotation improvement	We have introduced a feature that automatically detects some GCP markers when performing SFM processing using aerial target markers (GCP).	P5~ 7
	Support a new drone DJI MATRICE400 (Zenmuse P1)	Using DJI Matrice400( with P1 Camera) achieved +/- 5cm level accuracy. <a href="https://enterprise.dji.com/jp/matrice-400">https://enterprise.dji.com/jp/matrice-400</a>	P10
	Support a new drone ACSL RTK-SOTEN (Japanese Drone)	Using RTK So-TEN, achieved +/- 10cm level accuracy. <a href="https://www.acsl.co.jp/news-release/press-release/3085/">https://www.acsl.co.jp/news-release/press-release/3085/</a>	None
	SFM performance improvement	SFM performance (Improve the quality of the point cloud) and DTM quality Improvement (lower noise)	P 8



Classification	Contents
Bug fixes	We have fixed an issue where correction data could not be stopped after being distributed when an external wireless device was not connected.
	We have modified the input screen for known points to display the units.
	Fixed a bug where point cloud generation with GCP failed under certain specific conditions.
	Improvement of the GCP annotation UI: The cross mark was adjusted to make it easier to identify the GCP center (this was addressed because in some cases, accuracy deteriorated when using GCP due to this issue).
	The problem of SFM processing, when merging multiple flight data from DJI M4E, was fixed..
	The SC account authentication error remains even after recovered from offline.

## Downloading the mount point list instead of entering the mount point manually.

## nRTK setting menu

17:27 11月19日(水)

100% 14%

設定

小数点表記

セパレータ

緯度 / 経度

データ開始行

データ開始列

ネットワーク RTK サービス設定

ホスト・ポートを入力してから、右の更新ボタンでマウントポイント一覧を更新してください。

サービス名

d

ホスト

d-gnss.jp

ポート

2101

マウントポイント

RRSGD

更新

ユーザーID

パスワード

キャンセル

登録

ネットワーク設定

LTE 設定

IMEI 86 922304 136862 0

isp.docomo.net 削除 編集

SMART CONSTRUCTION Edge 本体の Wi-Fi パスワード設定

Select this button  
to open mount  
point list.



17:21 11月19日(木) 10:51 100% 14%

# 設定

小数点表記  
セパレータ  
精度 / 経度  
データ開始行  
データ開始列

ネットワーク  
サービス名  
Docomo  
ntrip.jenoba.jp  
rtcmv.smartco  
nstruction.com  
SMART CONSTRUCTION  
状態: ログイ  
SMART CONSTRUCTION  
LTE 設定  
(IMEI) 86 922304 136862 0  
isp.doccomiol.net 削除  
SMART CONSTRUCTION Edge 本体の W

## ネットワーク RTK サービス設定

ホスト・ポートを入力してから、右の更新ボタンでマウントポイントを更新してください。

サービス名	ホスト	ポート	マウントポイント	ユーザー ID	パスワード
RRSGD					
RRSG					
RRSD					
RRSGDV30					
RRSGV30					
RRSDV30					
RRSHGD					
RRSHG					
RRSHD					
RRSHGVDV30					
RRSHGV30					
RRSHDV30					
RRSGD2024					
RRSG2024					
RRSD2024					
RRSGD2024V30					
RRSG2024V30					
RRSD2024V30					
RRSHGD2024					
RRSHG2024					
RRSHD2024					
RRSHGD2024V30					
RRSHG2024V30					
RRSHD2024V30					

キャンセル

Show mount  
point list

During the GCP annotation, GCPs which is close to the coordinates entered will be automatically detected as shown below, and photo of the detected markers will be highlighted in orange.

17:22 11月19日(日) 10.5.1  
ドローン計測モード




つhf  
EPSG: JGD2011 / Japan Plane Rectangular CS IX  
垂直基準: JGD2011 (vertical) height

プロジェクト情報

標定点の座標を、手入力または取り込みで追加してください。

標定点の追加  
ポイントファイルの読み込み

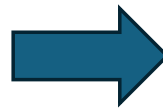
マーカの座標と写真との紐づけを行い、点群生成に使用するものを選択してください。未選択の場合は、画像データのみで点群が生成されます。

ポイント名	X(N)	Y(E)	Z	画像紐づけ	
g	-44045.079	22784.727	3.856	未	 
h	-44037.855	22778.716	3.844	未	 
k1	-44032.754	22780.054	3.814	未	 
k2	-44005.553	22761.019	4.415	未	 
k3	-43991.231	22778.508	3.529	未	 
k4	-44024.556	22804.721	3.556	未	 
k5	-44010.792	22805.125	5.783	未	 

生成開始

Entered GCP coordinates

Automatically detected and highlighted in orange.




17:22 11月19日(日) 10.5.1  
ドローン計測モード

つhf  
EPSG: JGD2011 / Japan Plane Rectangular CS IX  
垂直基準: JGD2011 (vertical) height

プロジェクト情報

マーカが映っている写真をタップして表示し、マーカの位置を指定してください。点群生成に使用するためには、位置指定済みの写真が4枚以上必要です。

☒ 位置指定済み ☐ 未指定(マーカ検出) ☐ 未指定













完了



In v10, when performing SFM processing using GCPs, the positions of the following markers can now be automatically detected.

## Detectable markers

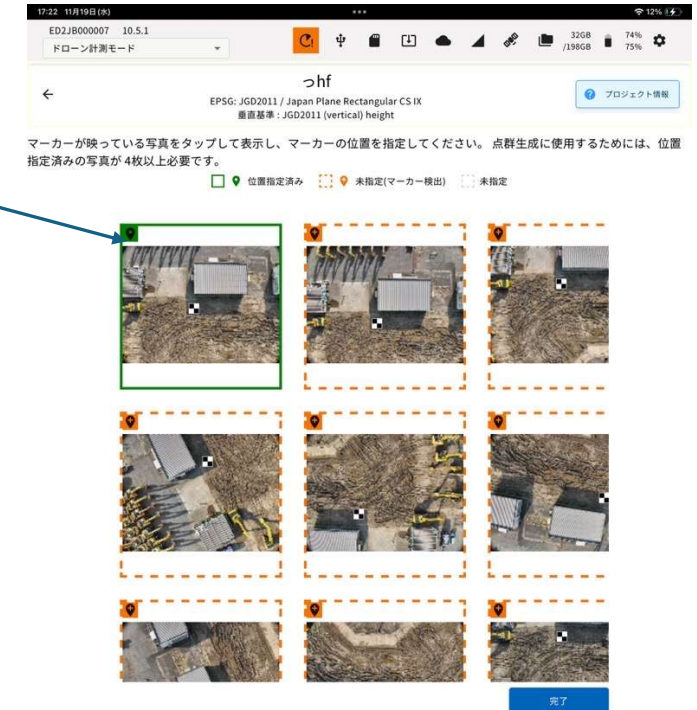
Confirmed	Possible, but not confirmed	Not detectable
検出可能	検出可能性あり	非対応
  Black & White with good contrast	 	       



Choose one of these orange GCP photos, then you will see the GCP marker automatically be focused in the center. If it is off-center, adjust it manually and tap OK. Once the GCP center is confirmed, it will be marked as located and turn green.



If the GCP center is confirmed will highlighted in green.

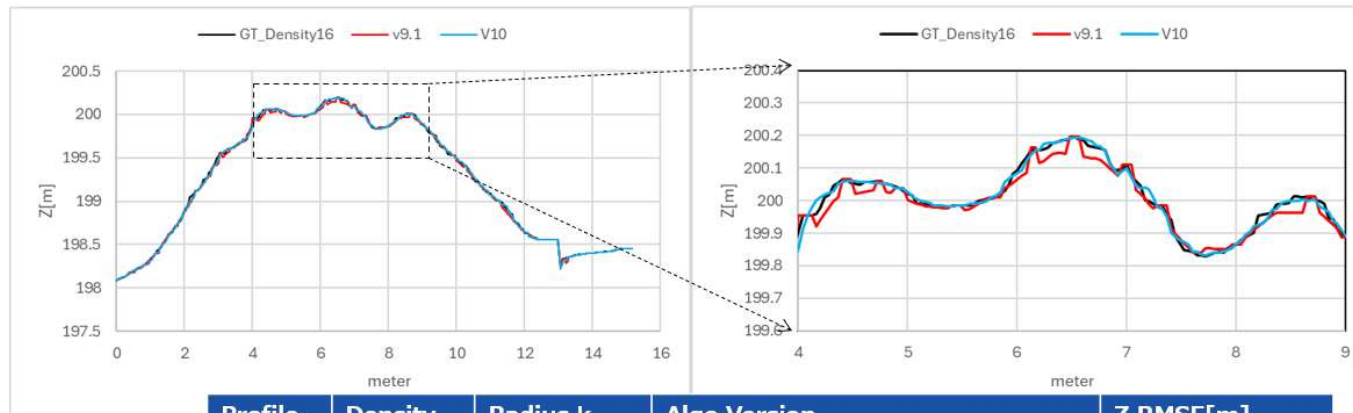
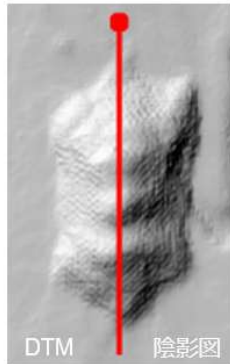


As shown below, the DTM noise was reduced even at the standard density.

## Edge2 v10 DTM改善 DTM quality improvement

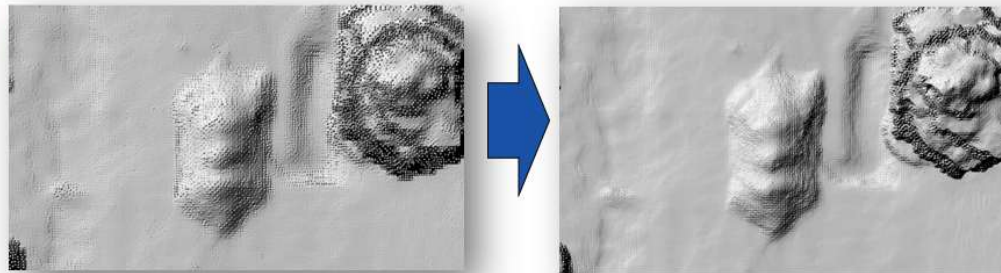
EB北米指摘箇所

Pointed out from EBNA



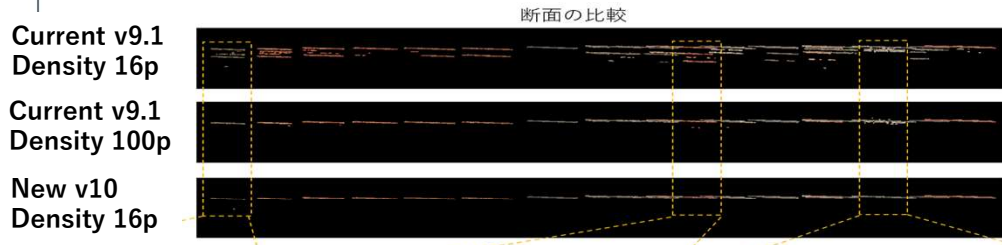
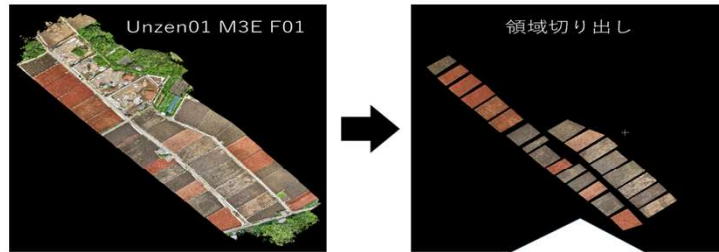
Profile	Density (pts/m2)	Radius k	Algo Version	Z RMSE[m]
GT	16	{0.1, 0.25}	処理時間を度外視したリッチな処理	-
v9.1	16	{0.1, 0.25}	v9.1	0.0217
v10	16	1.1	v10	0.0147

(DTM陰影図)

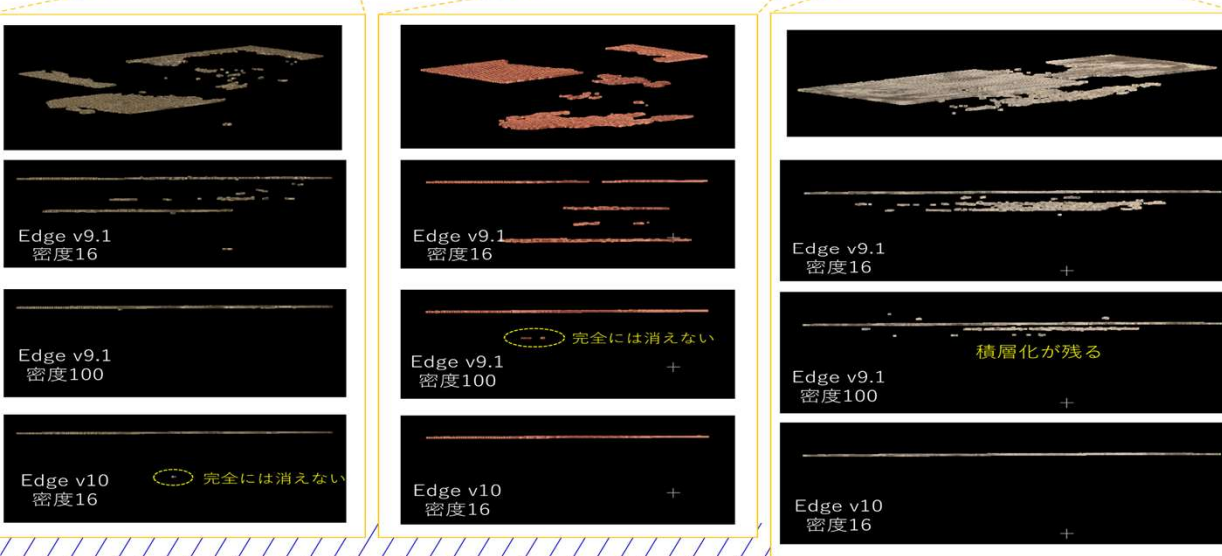


DTM noise低減を確認  
(RMSE, DTM陰影図)



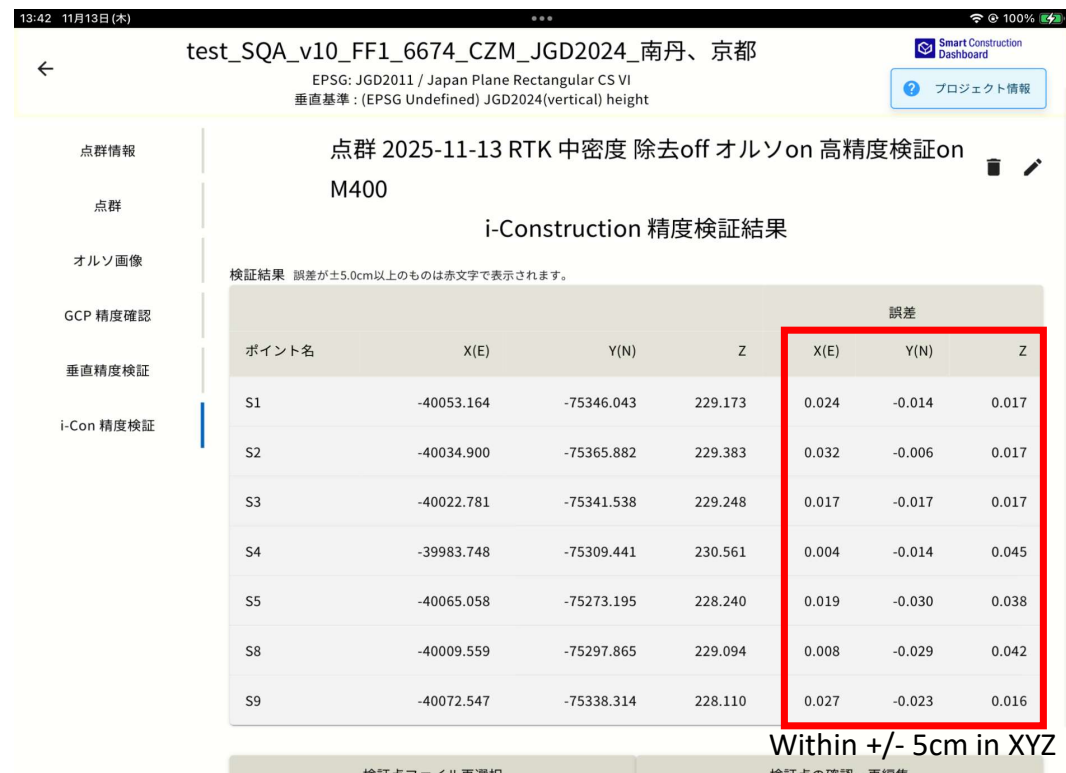
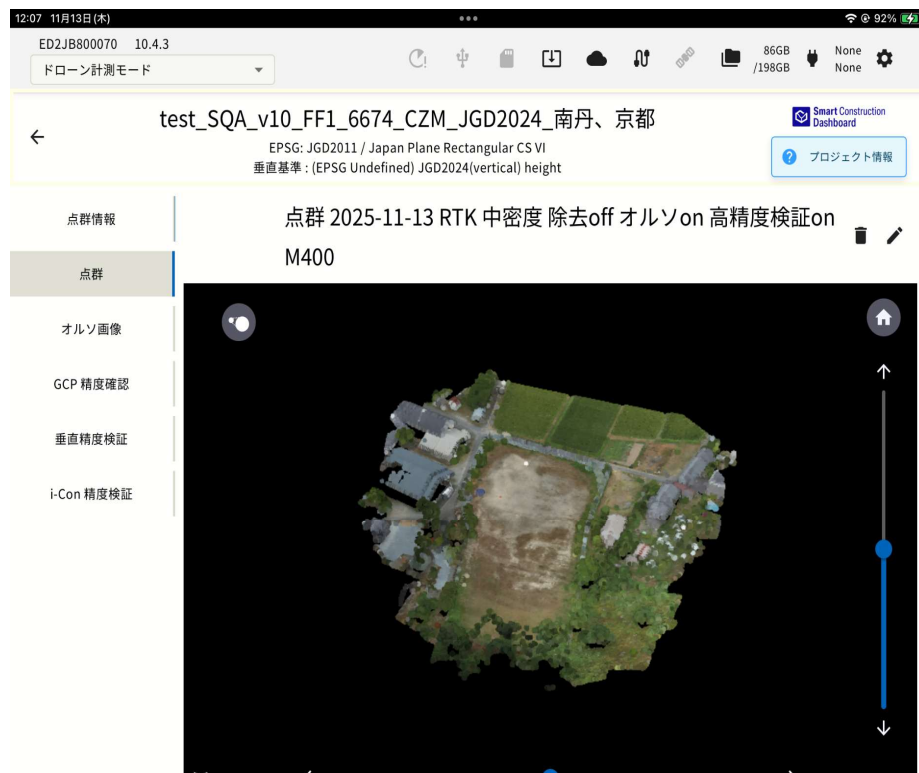


Even in shapes with repetitive patterns where SFM matching errors are likely to occur on certain site terrains, significant improvements in noise and layering problem, which were occurring in v9, have been observed in v10.



## DJI Matrice400 Support

### Accuracy check result



## ■ ■ v10.5.3 RC 1

OTA name : "10.5.3"

FW VERSION : "10.5.3"

OS VERSION : "7.2.0"

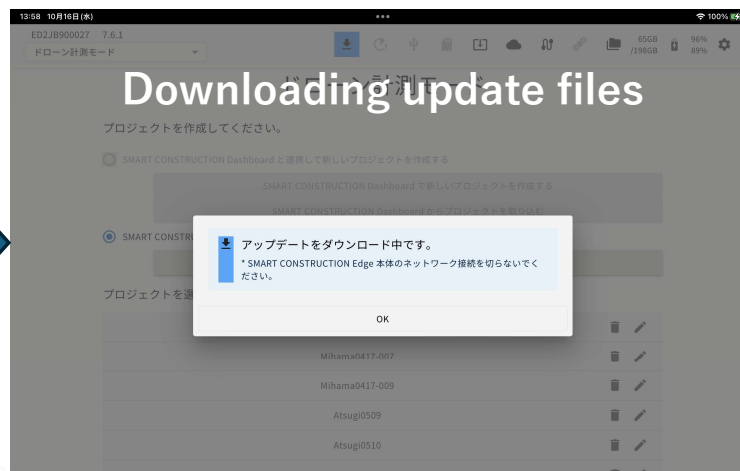
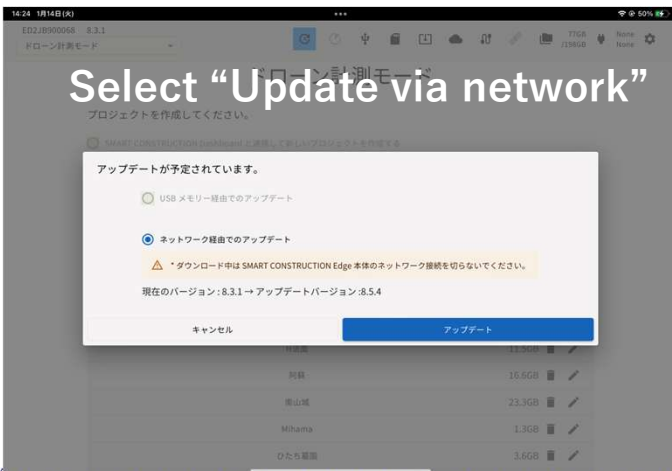
- ※iPad is recommended to update to IOS 18.7.1 or higher.

<Updating from Edge FW v7 or later>

- Connected to Internet, download the files to update, then press "Restart"
- If the operation LED turns flashing green to solid green, update has completed for the both FW and OS.

If you have a good network environment, such as a wired LAN connection, it will take about 30 minutes, while using LTE may take over an hour. Depending on the environment, it could take around 3 to 4 hours. Please be aware that updates may take a long time. \*The connection speed is assumed to be good at around 50 Mbps downstream.

Update completed and restart





For devices with software earlier than V7, the edge2 app cannot connect due to expired certificates. Please connect via an iPad browser from <http://scedge.local> and update the device. Note that it is <http://>, not <https://>.





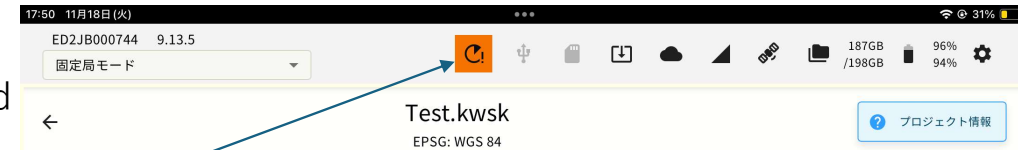
## &lt;Warning&gt; Malfunction Related to Battery Charging

There have been a few cases in the market where the battery could not be charged before v6. As a fundamental measure, we will update the battery control microcontroller. Consequently, the version upgrade sequence is as follows:

- ① As usual, the app will be downloaded. (1<sup>st</sup> download)
- ② After the download has complete (orange ↓), please restart the unit.
- ③ The OS download will begin. (2<sup>nd</sup> download)
- ④ Once the OS download is completed, the popup on the right will be displayed. →
- ⑤ Connect to AC and press the restart button. The red light on the 4-direction LED will stay on for a while, but please wait as is. Once the power turns OFF, restarting normally will complete the update.

\*If AC power is not connected in step ⑤

You can turn the power OFF and ON as usual, but the sub-microcontroller update will not be performed. Once AC power is connected while the power is ON, the update will occur when you turn the power OFF.



Message ifOS download is completed.

